



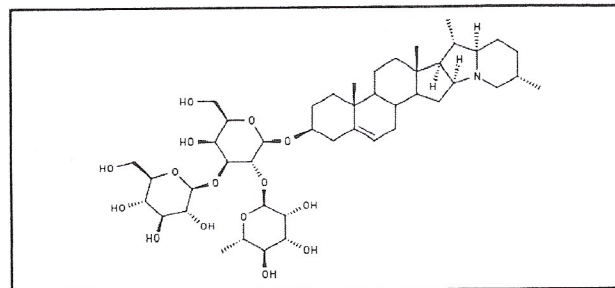
INDOFINE Chemical Company, Inc.

121 Stryker Lane, Bldg. 30
Hillsborough, NJ 08844 USA
Phone: (908) 359-6778; Fax: (908) 359-1179

Certificate Of Analysis

021652S **α -SOLANINE****Lot No.: 21102908**

CAS RN	20562-02-1
MOL FORMULA	C ₄₅ H ₇₃ NO ₁₅
MOL WEIGHT	868,08



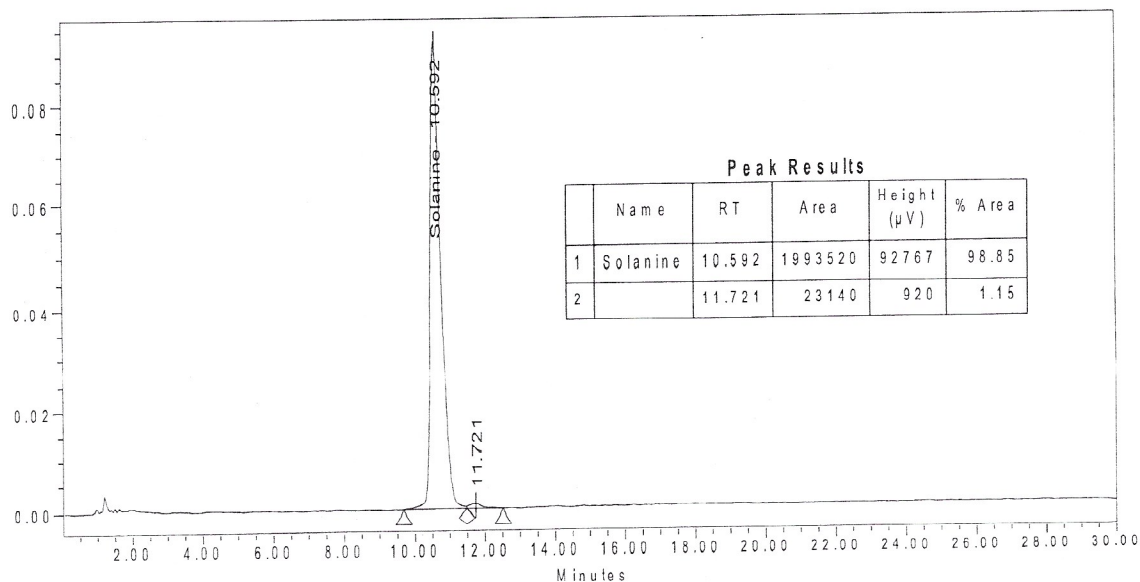
TEST	METHOD	UNIT	SPECIFICATION	RESULT
Appearance	Visual		White to beige powder	Conform
Water content	KF	% w/w		2,7
Residual solvents	GC-HS	% w/w		0,8
Inorganics	ICP-MS	% w/w		< 0,1
Purity	HPLC	% area	≥ 98,0	98,9
Assay	Calculated (*)	% w/w		95,4

(*) Assay = Purity by HPLC x (100 - %water - %solvents - %inorganics)

CHROMATOGRAPHIC PURITY / HPLC

Column : Novapack C18 - 3,9x150 mm - 4 μ m
Mobile phase : Ammonium phosphate buffer 0,1M pH 3,5 75 / ACN ;
Detection : UV 200 nm

Temperature : 30°C
Flow rate : 1 ml/min
Injection volume : 5 μ l
Injection solvent : Mobile phase



LONG TERM STORAGE : Below 8°C in a dry and dark place

TRANSPORT CONDITIONS : Ambient temperature